

Head Office:
Dixon Kelley Estate Agents
1 Penn Court
Station Road, West Moors
Dorset. BH22 0JJ

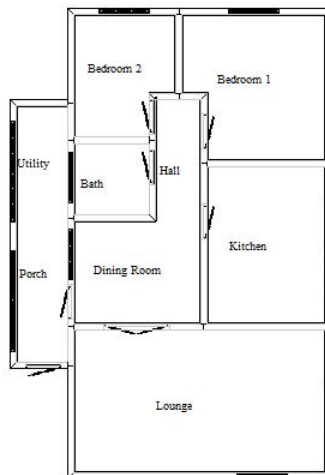
Dorset Park Homes

DRAFT

www.dorsetparkhomes.com

Telephone: 01202 877511

**95 Pinehurst Park, West Moors,
Ferndown, Dorset. BH22 0BP**



This drawing has been prepared for diagrammatic purpose only. Not to scale.



2-Bedroom Park Home approx 38' x 20'

- **Porch/Utility Area**
- **Large Lounge**
- **Dining Room**
- **Inner Hall**
- **Kitchen**
- **2 Double Bedrooms**
- **Bathroom**
- **Gas Central Heating**
- **PVCu Double Glazing**
- **Parking on Plot**
- **Patio Garden**
- **Semi/Retirement Park 45+**
- **Pets Considered**

Pitch Fee: approx £165.00 per cal month

PRICE £129,950

VIEWING STRICTLY BY APPOINTMENT WITH THE VENDOR'S AGENT Dorset Park Homes 01202 877511

IMPORTANT NOTE: These particulars are believed to be correct but their accuracy is not guaranteed. They do not form part of any contract. Nothing in these particulars shall be deemed to be a statement that the property is in good structural condition or otherwise, nor that any of the services, appliances, equipment or facilities are in good working order or have been tested. Purchasers should satisfy themselves on such matters prior to purchase Ref:W02864

Approximate room dimensions and brief description:

- **PORCH:** With Utility Area. Plumbing for automatic washing machine. Extractor fan. PVCu double glazing. Radiator.
- **LOUNGE:** 19'1" x 11'5". Feature fireplace with gas fire fitted & back boiler to serve domestic hot water and central heating system (system untested). Television aerial point. 2 radiators. PVCu double glazing.
- **DINING AREA:** 9'8" x 8'2". Recessed storage cupboard. Radiator. PVCu double glazing.
- **KITCHEN:** 12'6" x 9'3". Roll top work surfaces with inset 1/2 bowl sink unit with pumped water. 8 base cupboards and 8 matching wall units. Plumbing for automatic washing machine. Space for fridge/freezer. Gas cooker point. Radiator. PVCu double glazed window and door.
- **BEDROOM 1:** 10'11" x 10'10" max. Radiator. PVCu double glazed window.
- **BEDROOM 2:** 9'8" max x 6'. Plus 2 large double wardrobes. Radiator. PVCu double glazed window.
- **BATHROOM:** Panelled bath with Supajet electric shower unit over (untested). Tiled surround. Pedestal wash basin. Low level WC. Radiator. Double glazed window.
- **OUTSIDE:** Patio Garden enclosed by panelled fencing. 2 Parking bays.

**Additional photographs at
www.dorsetparkhomes.com**