

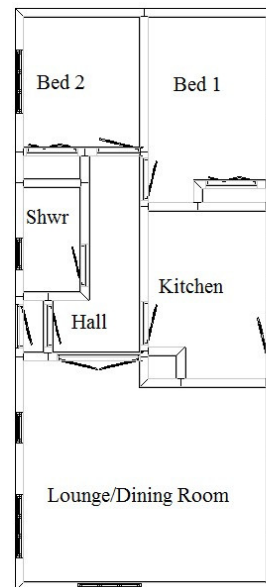
Head Office:
Dixon Kelley Estate Agents
1 Penn Court
Station Road, West Moors
Dorset. BH22 0JJ

Dorset Park Homes

www.dorsetparkhomes.com

Telephone: 01202 877511

8 Kingfisher Park, Wimborne Road, Bournemouth, Dorset. BH10 7BW



This drawing has been prepared for diagrammatic purpose only. Not to scale.

2 Bedroom 'Pathfinder' Park Home

Accommodation & approximate room dimensions:

- Entrance Lobby & Hall.
- Modern Kitchen: approx 11'5" x 7'5". Good range of floor and wall cupboards. Tall storage cupboard. Built in oven & hob with cooker hood over. Space for tall fridge/freezer.
- Lounge/Diner: approx 15'6" x 14'1" max. Double doors to garden. 2 bays windows.
- Bedroom 1: approx 11'1" x 7'6". Built in double wardrobe.
- Bedroom 2: approx 8'6" x 7'6". Double wardrobe.
- Modern Shower Room: Corner shower cubicle with shower fitted (untested).
- Gas Central Heating & PVCu Double Glazing
- Delightful Garden with deck area and distant views.
- Allocated Parking.
- Age Restriction 45+. No Pets Allowed.
- NO CHAIN

Well Presented Modern Home



Additional photographs at www.dorsetparkhomes.com

Price £125,950

Pitch Fee approx £121 per month

VIEWING STRICTLY BY APPOINTMENT WITH THE VENDOR'S AGENT Dorset Park Homes 01202 877511

IMPORTANT NOTE: These particulars are believed to be correct but their accuracy is not guaranteed. They do not form part of any contract. Nothing in these particulars shall be deemed to be a statement that the property is in good structural condition or otherwise, nor that any of the services, appliances, equipment or facilities are in good working order or have been tested. Purchasers should satisfy themselves on such matters prior to purchase. Ref.W03176

The recommended specialist in Park Home sales
Proprietor: Simon Dixon



Zoopa.co.uk

