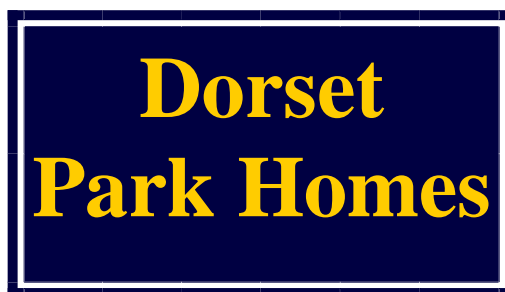


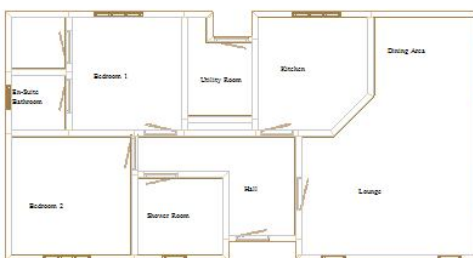
**Head Office:**  
Dixon Kelley Estate Agents  
1 Penn Court  
Station Road, West Moors  
Dorset. BH22 0JJ



[www.dorsetparkhomes.com](http://www.dorsetparkhomes.com)

**Telephone: 01202 877511**

**73 Dewlands Park  
West Close, Verwood, Dorset. BH31 6PR**



This drawing has been prepared for diagrammatic purpose only. Not to scale.



**2 -Bedroom Tingdene Park Home  
approx 38' x 20' (2002)**

**Additional photographs at  
[www.dorsetparkhomes.com](http://www.dorsetparkhomes.com)**

- **Entrance Hall**
- **Lounge & Dining Room**
- **Kitchen & Utility Room**
- **2-Double Bedrooms**
- **New En-Suite Bathroom**
- **Modern Shower Room**
- **Gas Central Heating**
- **PVCu Double Glazing**
- **New Carpets**
- **Garage approx 21'10" x 9'6" with Electronic Door. Driveway**
- **Age Restriction 50+**
- **Pets Considered**
- **Wooded Outlook**

**Pitch Fee: approx £143.00 per cal month**

- **Approximate room dimensions and brief description:**
- **ENTRANCE HALL:** Radiator. Display alcove. Cloaks cupboard. Hatch to roof with ladder fitted. Dado rail.
- **LOUNGE:** 19'7" x 14'4" max. Feature fireplace. 2 double radiators. Television aerial point. 4-wall light points. PVCu double glazed box bay window.
- **KITCHEN:** 9'7" x 9'0". Roll top work surfaces with inset 1.5 sink unit having mixer tap fitted. 6-base cupboards and 2 high level cupboards. Built-in oven, hob and cooker hood (appliances untested). Extractor fan. Radiator. PVCu double glazed window.
- **UTILITY ROOM:** Roll top work surface. Plumbing for automatic washing machine. Space for tumble dryer. Boiler cupboard housing gas fired central heating boiler serving central heating and domestic hot water (system untested). Inset spot lights. Door to garden.
- **BEDROOM 1:** 9'7" x 8'8" to wardrobe door. 2 wall light points. Walk-in wardrobe with shelving and lighting. Radiator. PVCu double glazed window. **EN SUITE BATHROOM:** Panelled bath with mixer tap & shower attachment with half tiled surround. Pedestal wash basin. Low level WC. Radiator. PVCu double glazed window.
- **BEDROOM 2:** 10'5" x 9'6". 2-double wardrobes. Telephone point. Radiator. PVCu bay window.
- **SHOWER ROOM:** Recently installed 'walk-in' shower unit with glass screen and tiled surround. Vanity unit with oval basin and cupboard below. Mirror and shaver point over. Low level WC. Radiator. PVCu double glazed window. Extractor fan.

**Offers Over £170,000**

**VIEWING STRICTLY BY APPOINTMENT WITH THE VENDOR'S AGENT Dorset Park Homes 01202 877511**

**IMPORTANT NOTE:** These particulars are believed to be correct but their accuracy is not guaranteed. They do not form part of any contract. Nothing in these particulars shall be deemed to be a statement that the property is in good structural condition or otherwise, nor that any of the services, appliances, equipment or facilities are in good working order or have been tested. Purchasers should satisfy themselves on such matters prior to purchase Ref:W02905

*The recommended specialist in Park Home sales*  
Proprietor: Simon Dixon



**Zoopa.co.uk**

**rightmove.co.uk**  
The UK's number one property website