

Head Office:
Dixon Kelley Estate Agents
1 Penn Court
Station Road, West Moors
Dorset. BH22 0JJ

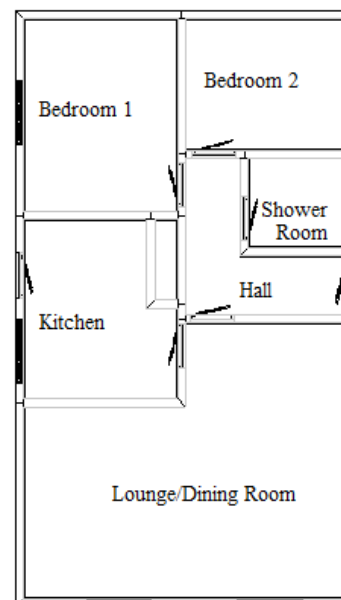
Dorset Park Homes

DRAFT

www.dorsetparkhomes.com

Telephone: 01202 877511

**6 Tulip Court,
Organford Country Manor, Poole. BH16 6ES**



2 -Bedroom Prestige Synota Park Home approx 36' x 20'

This drawing has been prepared for diagrammatic purpose only. Not to scale.

Accommodation & approximate room dimensions:

- **Hall:** Airing cupboard and cloaks cupboard.
- **Modern Kitchen:** approx 11'10" x 9'6". Built in fridge/freezer, washing machine, oven, hob and extractor hood. (appliances untested).
- **Lounge/Diner:** approx 19'5" x 17'2" max.
- **Bedroom 1:** approx 11'3" x 9'6". 2 double wardrobes
- **Bedroom 2:** approx 9'6" x 8'3". Double wardrobe
- **Luxury Shower Room**
- **Gas Central Heating** (system untested) (LPG)
- **PVCu Double Glazing**
- **Parking on Plot:** Brick drive for 2 cars
- **Lovely Garden**
- **Age Restriction 45+**
- **Pets Considered**

Pitch Fee: approx £178.88 per month



Additional photographs at www.dorsetparkhomes.com

Price £149,950

VIEWING STRICTLY BY APPOINTMENT WITH THE VENDOR'S AGENT Dorset Park Homes 01202 877511

IMPORTANT NOTE: These particulars are believed to be correct but their accuracy is not guaranteed. They do not form part of any contract. Nothing in these particulars shall be deemed to be a statement that the property is in good structural condition or otherwise, nor that any of the services, appliances, equipment or facilities are in good working order or have been tested. Purchasers should satisfy themselves on such matters prior to purchase. Ref.W02917

The recommended specialist in Park Home sales

Proprietor: Simon Dixon



Zoopla.co.uk

rightmove.co.uk
The UK's number one property website