

Head Office:
Dixon Kelley Estate Agents
1 Penn Court
Station Road, West Moors
Dorset. BH22 0JJ

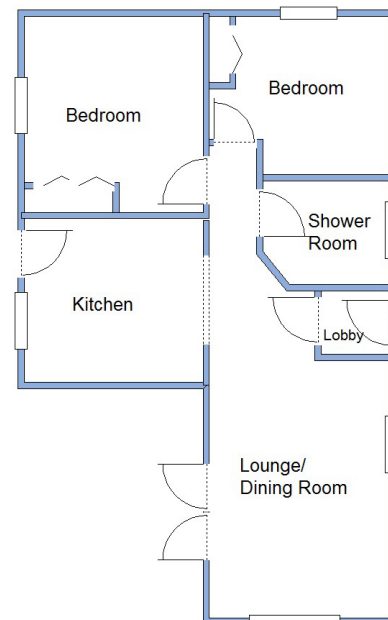
DORSET PARK HOMES

DRAFT

www.dorsetparkhomes.com

Telephone: 01202 877511

6 Kingfisher Park, 1205/1207 Wimborne Road, Redhill, Bournemouth. BH10 7BW



This drawing has been prepared for diagrammatic purpose only. Not to scale

2 Bedroom Park Home approx 34' x 20'

Accommodation & approximate room dimensions:

- Pathfinder 'Ferndale Lodge' 2007
- Entrance Lobby
- Kitchen: approx 9'5" x 8'8". Range of floor and wall cupboards. Built in oven, hob & cooker hood (2017) (untested). Space for tall fridge/freezer. Plumbing for washing machine. Combination gas boiler (installed 2018). Untested).
- Lounge/Dining Room: approx 17'4" max x 9'5". Triple aspect. Feature fireplace. Double doors to garden.
- Hall: Hatch to roof.
- Bedroom 1: approx 10'5" x 9'5". Triple wardrobe & high level storage cupboards. Bay window.
- Bedroom 2: approx 9'5" x 8'5". Double wardrobe & high level storage cupboards.
- Shower Room: Installed 2016. Large shower cubicle with thermostatic shower unit (untested). Vanity unit. Low level WC. Modern radiator. Bamboo wood floor.
- Gas Central Heating (system untested)
- PVCu Double-Glazing
- Allocated Parking Bay
- Patio Garden. Water tap. Electric socket.
- Age Restriction 50+
- No Pets Allowed

Wonderful Views



Additional photographs at www.dorsetparkhomes.com

Price £137,500

Pitch Fee: approx £132.60 per calendar month

VIEWING STRICTLY BY APPOINTMENT WITH THE VENDOR'S AGENT Dorset Park Homes 01202 877511

IMPORTANT NOTE: These particulars are believed to be correct but their accuracy is not guaranteed. They do not form part of any contract. Nothing in these particulars shall be deemed to be a statement that the property is in good structural condition or otherwise, nor that any of the services, appliances, equipment or facilities are in good working order or have been tested. Purchasers should satisfy themselves on such matters prior to purchase. Ref.W03764

The recommended specialist in Park Home sales
Proprietor: Simon Dixon

