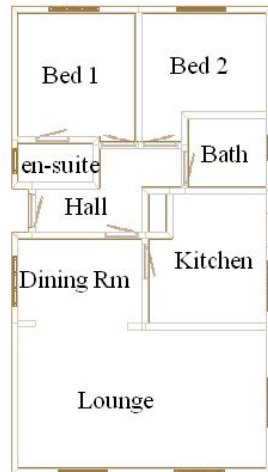


51 Hillbury Park Alderholt, Nr Fordingbridge, Hants SP6 3BW



Prepared for diagrammatic purposes. Not to scale.

2-Bedroom Wessex Dorset Park Home—approx 36'x20'

- Hall
 - Lounge & Dining Area
 - Kitchen
 - 2 Bedrooms
 - Bathroom
 - En Suite Shower Room
 - PVCu Double Glazing
 - Gas Central Heating
 - Garden-Metal shed. Patio
 - Garage & Parking Space
 - Semi/Retirement. Age 50+
 - No children. Dogs allowed
- PITCH FEE approx £149.00 pcm**
- **Approximate Room Dimensions and brief description:**
 - **HALL:** Display alcove. Linen cupboard. Radiator.
 - **LOUNGE:** 19'6" x 11'2". Feature fireplace. 2 radiators. 2 wall lights. TV aerial point. Dimmer switch. PVCu double glazed window.
 - **DINING AREA:** 6'10" x 9'10". Radiator. PVCu double glazed window.
 - **KITCHEN:** 10'4" x 9'5". Roll top work surfaces with inset 1.5 bowl sink unit having mixer tap fitted. Built in double oven, gas hob (appliances untested). Base and high level cupboards. Nest of drawers. Wall mounted combination gas fired boiler serving central heating and domestic hot water (system untested). Tall larder cupboard. Water softener. Plumbing for washing machine. Radiator.
 - **BEDROOM 1:** 10'1" x 9'7". 1 triple and 1 double wardrobe with centre dresser unit. Radiator. PVCu double glazed window. **EN SUITE SHOWER ROOM:** Fully fitted shower cubicle with 'Mira' shower fitted. Washbasin. Low level WC Radiator. PVCu double glazed window.
 - **BEDROOM 2:** 10'1" max overall x 9'7" max overall. Double wardrobe with adjoining dresser unit. Radiator. PVCu double glazed window.
 - **BATHROOM:** Panelled bath. Low level WC. Pedestal Washbasin. Radiator. Extractor fan. PVCu double glazed window.

PRICE: £130,000

VIEWING STRICTLY BY APPOINTMENT WITH THE VENDOR'S AGENT

IMPORTANT NOTE: These particulars are believed to be correct but their accuracy is not guaranteed. They do not form part of any contract. Nothing in these particulars shall be deemed to be a statement that the property is in good structural condition or otherwise, nor that any of the services, appliances, equipment or facilities are in good working order or have been tested. Purchasers should satisfy themselves on such matters prior to purchase Ref.W01916