

Head Office:
Dixon Kelley Estate Agents
1 Penn Court
Station Road, West Moors
Dorset. BH22 0JJ

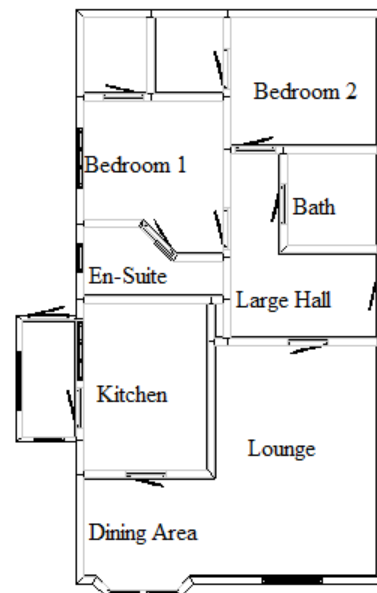
Dorset Park Homes

DRAFT

www.dorsetparkhomes.com

Telephone: 01202 877511

3 Stour Park, New Road, Northbourne, Bournemouth. BH10 7DE



This drawing has been prepared for diagrammatic purpose only. Not to scale.

2 Bedroom 'Omar Sandringham' Park Home Approx 40' x 20' (2007)

Accommodation & approximate room dimensions:

- **Spacious Entrance Hall:**
- **Lounge:** approx 15'9" x 11'0". Feature fireplace.
- **Dining Area:** approx 8'3" x 8'2" wide bay window.
- **Quality Kitchen:** approx 11'4" x 7'9". Good range of wall and floor units. Built in oven, hob and cooker hood (untested). Dishwasher, washing machine and integrated fridge/freezer (appliances untested). Gas fired combination boiler (untested).
- **Bedroom 1:** approx 9'2" x 8'1". Walk in wardrobe.
- **En-Suite Shower Room:**
- **Bedroom 2:** approx 9'6" x 8'9". Fitted dresser unit. Walk in wardrobe.
- **Bathroom:** Corner bath with shower over.
- **PVCu Double Glazing & Gas Central Heating** (system untested)
- **Delightful Private Garden.**
- **Parking on Plot & GARAGE**
- **Age restriction 60+ & No Pets Allowed**

Spacious Park Home on a very Popular Park



Additional photographs at www.dorsetparkhomes.com

Price £189,950

Pitch Fee approx £144.81 per cal calendar month

VIEWING STRICTLY BY APPOINTMENT WITH THE VENDOR'S AGENT Dorset Park Homes 01202 877511

IMPORTANT NOTE: These particulars are believed to be correct but their accuracy is not guaranteed. They do not form part of any contract. Nothing in these particulars shall be deemed to be a statement that the property is in good structural condition or otherwise, nor that any of the services, appliances, equipment or facilities are in good working order or have been tested. Purchasers should satisfy themselves on such matters prior to purchase. Ref.W03115

The recommended specialist in Park Home sales
Proprietor: Simon Dixon

