

Head Office:
Dixon Kelley Estate Agents
1 Penn Court
Station Road, West Moors
Dorset. BH22 0JJ

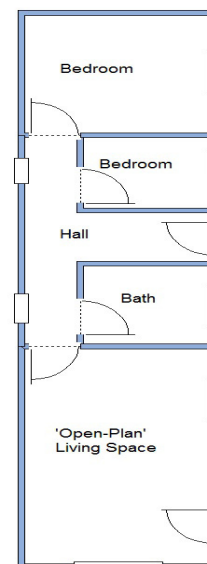
Dorset Park Homes

DRAFT

www.dorsetparkhomes.com

Telephone: 01202 877511

27 Moorside, Oaktree Park, St Leonards, Ringwood, Hampshire. BH24 2RN



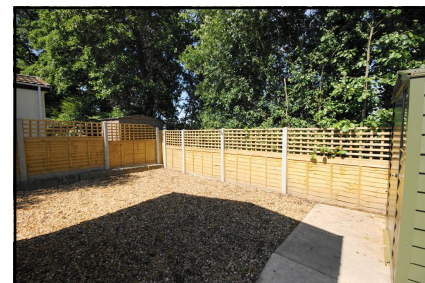
This drawing has been prepared for diagrammatic purpose only. Not to scale.

2 Bedroom Park Home approx 40' x 10'

Accommodation & approximate room dimensions:

- Entrance Hall
- OPEN PLAN LIVING AREA: approx 15'3" x 9'2"
- Modern Fitted Kitchen: Range of floor and wall cupboards. Integrated electric oven, gas hob & extractor hood over (untested). Integrated fridge/freezer & washing machine (untested). Cupboard housing Combination Gas Fired Boiler (untested).
- Lounge/Dining Room: Feature fireplace (untested) PVCu door to garden. Inset spotlights (untested).
- Bedroom 1: approx 9'2" x 8'4". Fitted wardrobes.
- Bedroom 2: approx 6'4" x 5'0". Fitted wardrobes.
- Modern Bathroom: Panelled bath with shower over (shower untested).
- Gas Central Heating (system untested).
- PVCu Double Glazing
- Garden: Mainly laid to Lawn. & Shingle. Shed.
- Age Restriction 50+
- Pets Considered
- **Brand New Home**

BRAND NEW 2 Bedroom 'Homeseeker Affinity'



Additional photographs at www.dorsetparkhomes.com

Price £115,000

Pitch Fee approx £175.13

VIEWING STRICTLY BY APPOINTMENT WITH THE VENDOR'S AGENT Dorset Park Homes 01202 877511

IMPORTANT NOTE: These particulars are believed to be correct but their accuracy is not guaranteed. They do not form part of any contract. Nothing in these particulars shall be deemed to be a statement that the property is in good structural condition or otherwise, nor that any of the services, appliances, equipment or facilities are in good working order or have been tested. Purchasers should satisfy themselves on such matters prior to purchase Ref.W03281

The recommended specialist in Park Home sales
Proprietor: Simon Dixon



Zoopa.co.uk

