

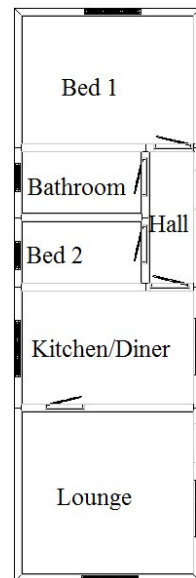
**Head Office:**  
Dixon Kelley Estate Agents  
1 Penn Court  
Station Road, West Moors  
Dorset. BH22 0JJ

# Dorset Park Homes

[www.dorsetparkhomes.com](http://www.dorsetparkhomes.com)

**Telephone: 01202 877511**

**26 Stour Park, New Road, Northbourne, Bournemouth. BH10 7DE**



This drawing has been prepared for diagrammatic purpose only. Not to scale.

## 2 Bedroom 'Wonderland Special' Park Home approx 38' x 12'

Accommodation & approximate room dimensions:

- Entrance Hall. Airing cupboard.
- Modern Kitchen: approx 11'5" x 7'9". Good range of floor and wall units. Cooker point. Plumbing for automatic washing machine. Space for fridge/freezer.
- Lounge: approx 11'5" x 11'5".
- Bedroom 1: approx 11'5" x 8'9". Built in wardrobes & chest of drawers.
- Bedroom 2: approx 8'9" x 4'3". Built in wardrobe.
- Modern Bathroom: Panelled bath with shower over.
- Gas Fired Central Heating (untested)
- PVCu Double Glazing
- Parking on plot
- Patio Garden with Sunny Aspect
- Age Restriction 60 + & No Pets Allowed
- CLOSE TO AMENITIES

## Popular Residential Park



Additional photographs at [www.dorsetparkhomes.com](http://www.dorsetparkhomes.com)

**Price £129,950**

Pitch Fee approx £138.70 per month

VIEWING STRICTLY BY APPOINTMENT WITH THE VENDOR'S AGENT Dorset Park Homes 01202 877511

**IMPORTANT NOTE:** These particulars are believed to be correct but their accuracy is not guaranteed. They do not form part of any contract. Nothing in these particulars shall be deemed to be a statement that the property is in good structural condition or otherwise, nor that any of the services, appliances, equipment or facilities are in good working order or have been tested. Purchasers should satisfy themselves on such matters prior to purchase Ref.W03152

*The recommended specialist in Park Home sales*  
Proprietor: Simon Dixon



Zoopa.co.uk

