

Head Office:
Dixon Kelley Estate Agents
1 Penn Court
Station Road, West Moors
Dorset. BH22 0JJ

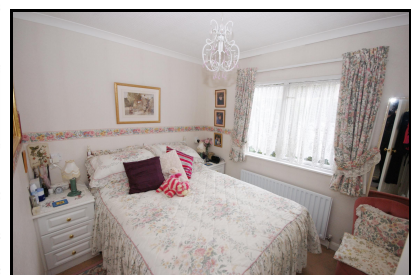
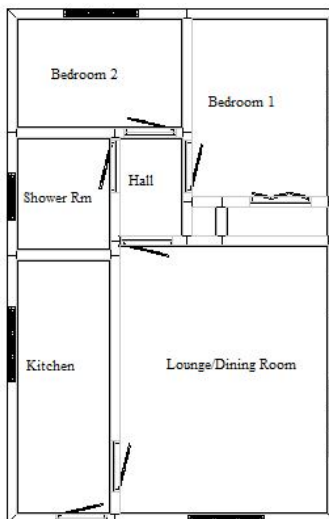
Dorset Park Homes

DRAFT

www.dorsetparkhomes.com

Telephone: 01202 877511

**24 Redhill Park, Wimborne Road,
Bournemouth, Dorset. BH10 7BW**



**2-Bedroom Wessex Park Home (1998)
approx 26' x 16'**

This drawing has been prepared for diagrammatic purpose only. Not to scale.

**Additional photographs at
www.dorsetparkhomes.com**

- **Lounge/Dining Room**
- **Kitchen**
- **Inner Hall**
- **2 Bedrooms**
- **Modern Shower Room**
- **Gas Central Heating**
- **PVCu Double Glazing**
- **Allocated Parking**
- **Patio Garden. Metal Shed**
- **Semi/Retirement Park 45+**
- **No Pets Allowed**

Approximate Room Dimensions and brief description:

- **LOUNGE/DINING ROOM:** 14'3" x 10'5". PVCu double glazed bay windows. 2 radiators. Feature fireplace (untested). TV aerial point. Telephone point. Door to garden.
- **INNER HALLWAY.**
- **KITCHEN:** ' ' x ' '. Roll top work surfaces with inset stainless steel sink unit having mixer tap fitted. 3 base cupboards & 4 matching high level cupboards. Built in electric oven. Gas hob & extractor hood over (untested). Space for tall fridge freezer. Space for automatic washing machine. Cupboard housing Worcester combination gas boiler to serve gas central heating & hot water (untested), Radiator. PVCu double glazed window.
- **BEDROOM 1:** ' ' x ' '. 2 Built in double wardrobes. 2 Bedside drawer units. Radiator. PVCu double glazed window.
- **BEDROOM 2:** ' ' x ' '. Radiator. PVCu double glazed window. Built in single wardrobe.
- **SHOWER ROOM:** Fully tiled. Modern suite comprising shower cubicle with 'Triton' shower unit over (untested). Pedestal washbasin. Low level WC. Tall heated towel rail. Extractor fan. PVCu double glazed window.

Pitch Fee: approx £125.45 per cal month

PRICE £69,950

VIEWING STRICTLY BY APPOINTMENT WITH THE VENDOR'S AGENT Dorset Park Homes 01202 877511

IMPORTANT NOTE: These particulars are believed to be correct but their accuracy is not guaranteed. They do not form part of any contract. Nothing in these particulars shall be deemed to be a statement that the property is in good structural condition or otherwise, nor that any of the services, appliances, equipment or facilities are in good working order or have been tested. Purchasers should satisfy themselves on such matters prior to purchase Ref:W02885

The recommended specialist in Park Home sales
Proprietor: Simon Dixon



Zoopa.co.uk

rightmove.co.uk
The UK's number one property website