

**Head Office:**  
Dixon Kelley Estate Agents  
1 Penn Court  
Station Road, West Moors  
Dorset. BH22 0JJ

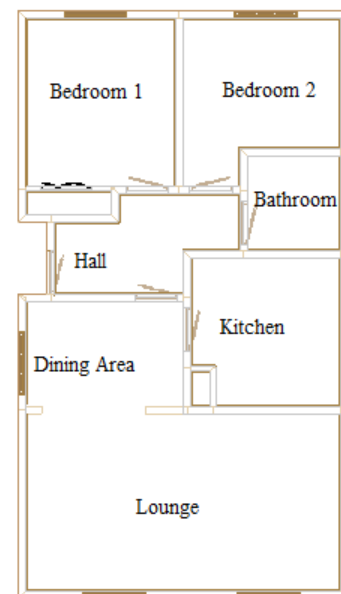
# Dorset Park Homes

**DRAFT**

[www.dorsetparkhomes.com](http://www.dorsetparkhomes.com)

**Telephone: 01202 877511**

## 2 Beds Corner, Lone Pine Park, Lone Pine Drive, Ferndown, BH22 8NG

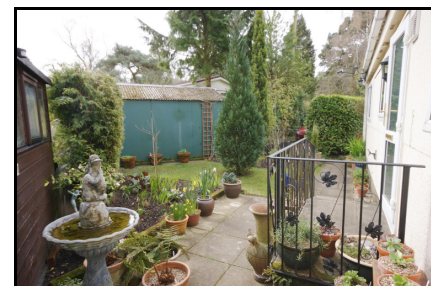


This drawing has been prepared for diagrammatic purpose only. Not to scale.

### 2 Bedroom 'Wonderland Dorchester' Park Home approx 36' x 20'

#### Accommodation & approximate room dimensions:

- Entrance Hall
- Kitchen: approx 10'4" x 9'5". Range of base & wall units & stainless steel sink unit. Cooker, washing machine & dishwasher included (untested).
- Lounge: approx 19'8" x 11'3". Feature fireplace with electric fire fitted (untested).
- Dining Area: approx 10'1" x 7'0". Cupboard housing modern Combination Gas Boiler (installed 2010) (system untested).
- Bedroom 1: approx 10'6" x 9'8". Fitted wardrobes.
- Bedroom 2: approx 10'6" max x 9'4" max. Fitted wardrobes.
- Bathroom: Electric shower fitted (untested).
- Gas Central Heating. (system untested)
- PVCu Double Glazing
- Delightful Secluded Private Garden
- Driveway & GARAGE
- Retirement Park Only 60+
- No Pets Allowed



Pitch Fee approx £403.83 per quarter

Additional photographs at [www.dorsetparkhomes.com](http://www.dorsetparkhomes.com)

**Price £139,950**

**VIEWING STRICTLY BY APPOINTMENT WITH THE VENDOR'S AGENT Dorset Park Homes 01202 877511**

**IMPORTANT NOTE:** These particulars are believed to be correct but their accuracy is not guaranteed. They do not form part of any contract. Nothing in these particulars shall be deemed to be a statement that the property is in good structural condition or otherwise, nor that any of the services, appliances, equipment or facilities are in good working order or have been tested. Purchasers should satisfy themselves on such matters prior to purchase Ref.W03069

*The recommended specialist in Park Home sales*  
Proprietor: Simon Dixon



Zoopa.co.uk

