

Head Office:
Dixon Kelley Estate Agents
1 Penn Court
Station Road, West Moors
Dorset. BH22 0JJ

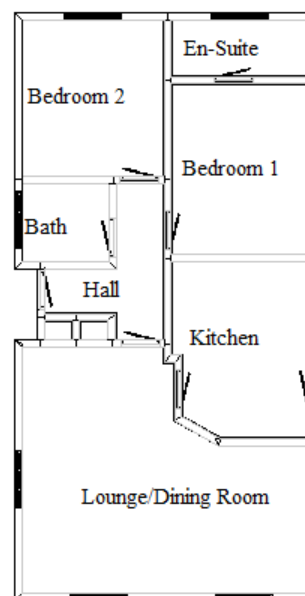
Dorset Park Homes

DRAFT

www.dorsetparkhomes.com

Telephone: 01202 877511

15 Dewlands Park, West Close, Verwood, Dorset. BH31 6PR



2 Bedroom 'Homeseeker' Park Home Approx 40' x 20' (2009)

This drawing has been prepared for diagrammatic purpose only. Not to scale.

Accommodation & approximate room dimensions:

- Entrance Hall: 2 Storage cupboards & roof hatch.
- Modern Kitchen: approx 12'5" x 9'7". Built in oven, hob & cooker hood (appliances untested). Integrated fridge/freezer, dishwasher and washing machine (appliances untested). New Worcester Bosch boiler (untested).
- Lounge/Diner: approx 19'5" x 17'2" overall. Feature fireplace.
- Bedroom 1: approx 12'0" x 9'6". Range of built in wardrobes & dresser unit.
- En-Suite Shower Room
- Bedroom 2: approx 11'1" x 9'6". 5 door wardrobe range with adjoining dresser unit.
- Bathroom
- Gas Central Heating. (system untested)
- PVCu Double Glazing
- Parking on Plot
- Garden. Lawn area and area of decorative stones with inset patio area.
- Age Restriction 50+
- Pets considered

Pitch Fee approx £174.53 per cal month



Price £179,950

Additional photographs at www.dorsetparkhomes.com

VIEWING STRICTLY BY APPOINTMENT WITH THE VENDOR'S AGENT Dorset Park Homes 01202 877511

IMPORTANT NOTE: These particulars are believed to be correct but their accuracy is not guaranteed. They do not form part of any contract. Nothing in these particulars shall be deemed to be a statement that the property is in good structural condition or otherwise, nor that any of the services, appliances, equipment or facilities are in good working order or have been tested. Purchasers should satisfy themselves on such matters prior to purchase. Ref.W03012

The recommended specialist in Park Home sales
Proprietor: Simon Dixon



Zoopla.co.uk

