

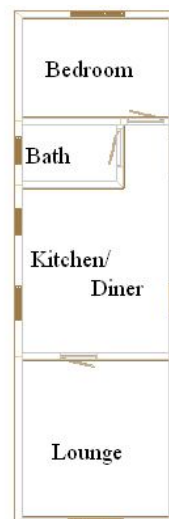
**Head Office:**  
Dixon Kelley Estate Agents  
1 Penn Court  
Station Road, West Moors  
Dorset. BH22 0JJ

# Dorset Park Homes



**Telephone: 01202 877511**

## 107a The Crescent, Oaktree Park St Leonards, Nr Ringwood, Hants. BH24 2RP



### 1 Bedroom Park Home—approx 36' x 10'

This drawing has been prepared for diagrammatic purpose. Not to scale.

- **Hall**
- **Lounge**
- **Kitchen/Diner**
- **Bedroom**
- **Shower Room**
- **Gas Central Heating**
- **PVCu Double Glazing**
- **Parking on Pitch**
- **Garden. Patio. Shed**
- **Outside Lighting**
- **Semi/Retirement Park 50+**
- **Pets Considered**

- **Approximate room dimensions and brief description::**
- **HALL:**
- **LOUNGE: 11'8" x 9'8"**. Fitted gas fire (untested). Television aerial point. Fitted storage cupboard. Radiator. PVCu double glazed window and door to garden.
- **KITCHEN/DINER: 12'3" x 9'8"**. Roll top work surfaces with 7 base cupboards below. Space for gas cooker. 5 wall cupboards & tall larder cupboard. Inset stainless steel sink unit. Space for fridge/freezer. Plumbing for automatic washing machine. Radiator. PVCu double glazed window.
- **BEDROOM : 9'8" x 7'3"**. 3 single wardrobes & nest of drawers. Radiator. PVCu double glazed window.
- **SHOWER ROOM:** Walk-in shower with thermostatic shower unit fitted (untested). Pedestal wash basin. Low level WC. Radiator. PVCu double glazed window.

**Pitch Fee: approx £120.50 per calendar month (subject to annual review)**

## PRICE: £64,950

**VIEWING STRICTLY BY APPOINTMENT WITH THE VENDOR'S AGENT Dorset Park Homes 01202 877511**

IMPORTANT NOTE: These particulars are believed to be correct but their accuracy is not guaranteed. They do not form part of any contract. Nothing in these particulars shall be deemed to be a statement that the property is in good structural condition or otherwise, nor that any of the services, appliances, equipment or facilities are in good working order or have been tested. Purchasers should satisfy themselves on such matters prior to purchase Ref.W02507